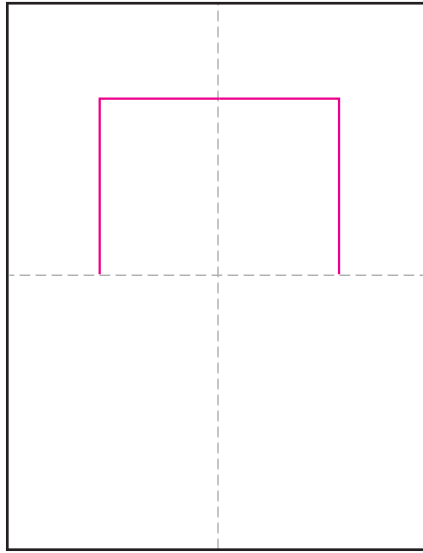


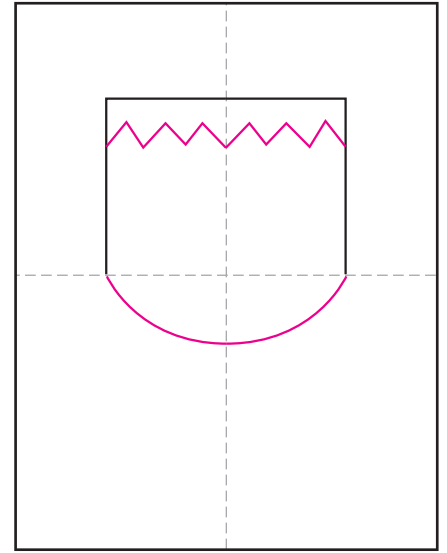
Draw Frankenstein



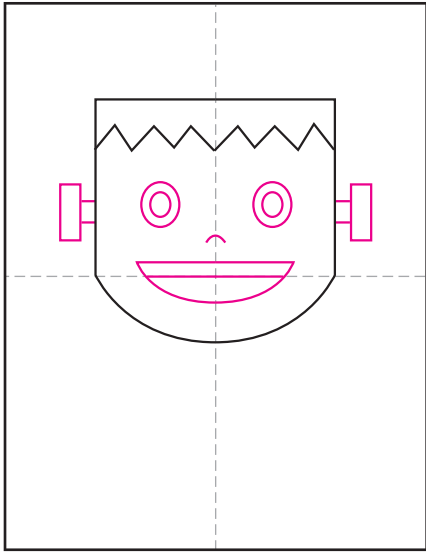
Supplies: Markers, marker paper



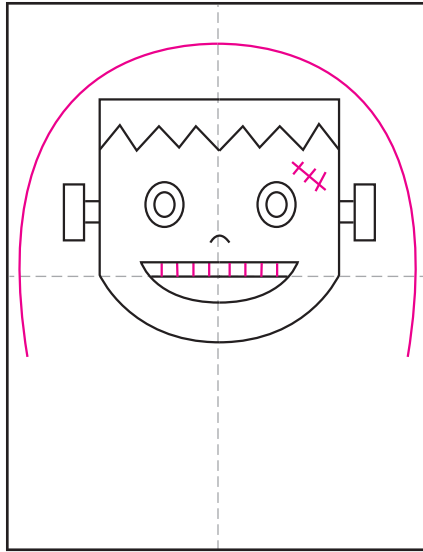
1. Make guide lines. Start the head.



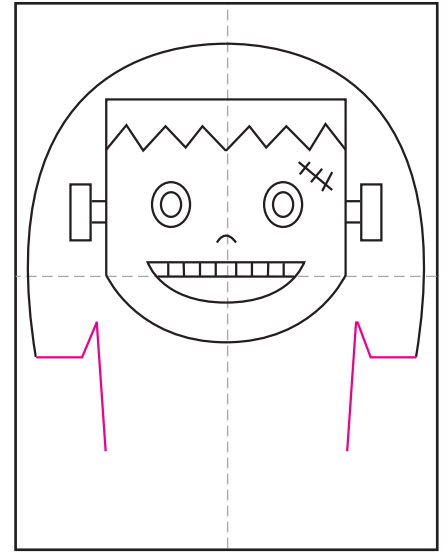
2. Finish the chin, add hair.



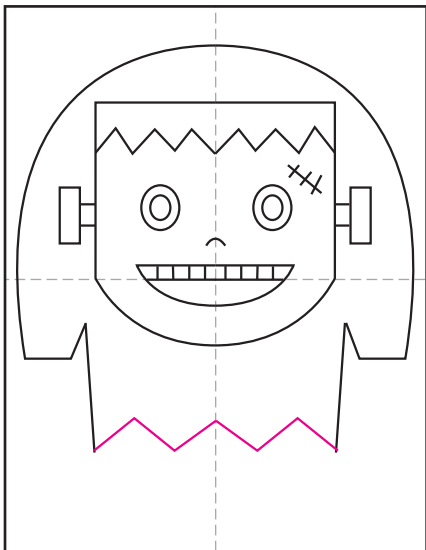
3. Draw eyes, nose, mouth, screws.



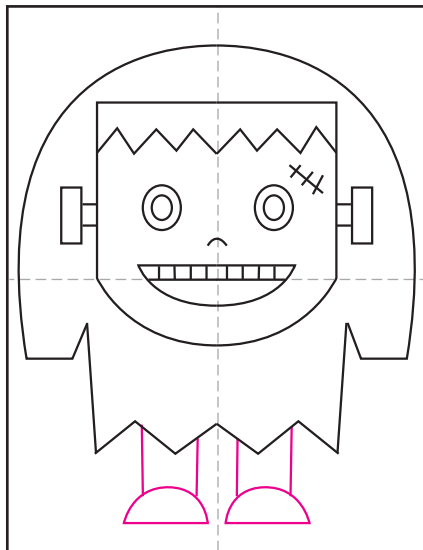
4. Draw the shoulders.



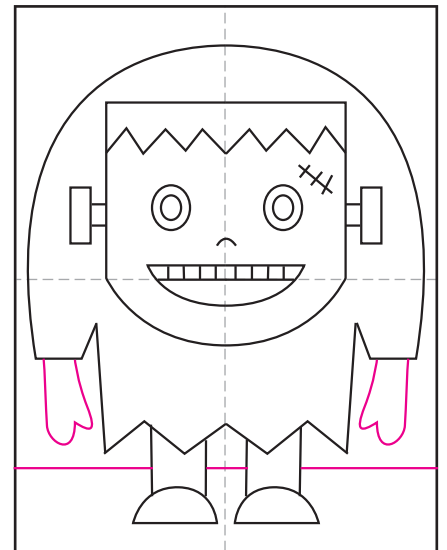
5. Add the sleeves.



6. Draw the zig-zag hem.



7. Draw the legs and feet.



8. Add hands and horizon line.