

Boobies

Nancy Vo

Battleship Game: Vertebrates and Invertebrates

Instructions: The game can be played in partners, small groups, or as a class divided in two teams. Each team will have a game board with a 10x10 grid. Each team will place their vertebrate and invertebrate animals on their grid. The teams will take turns guessing where the other team has placed their animals. They will have to ask using character traits of the vertebrate or invertebrate (e.g., "Is your animal that has gills in B2?"). If a guess hits an animal, the team will mark it on their own grid. The first team to correctly guess the location of all the animals on the other team's grid wins.

Invertebrate Animals	Vertebrate Animals
Insects	Fish
Arachnids	Amphibians
Mollusks	Reptiles
Echinoderms	Birds
Worms	Mammals

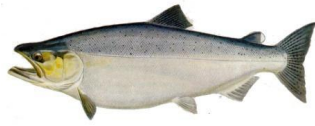
Materials:

- 10 X 10 Grids (2 each team) Enlarge as needed.
- Invertebrate picture cards
- Vertebrate picture cards
- Plastic sleeve
- Whiteboard markers and erasers

Battleship Game	A	B	C	D	E	F	G	H	I	J
1										
2										
3										
4										
5										
6										
7										
8										
9										
10										

Vertebrates

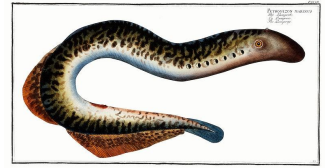
FISH



Salmon



Tuna



Sea Lamprey

AMPHIBIANS



Salamander



Frog



Axolotl

REPTILES



Crocodile



Gecko



Snake

BIRDS



Robin



Eagle



Blue-footed
boobie

MAMMALS



Cow



Dog



Bat

Invertebrates

INSECTS



Ant



Stinkbug



Ladybug

ARACHNIDS



Tarantula



Scorpion



Widow Spider

MOLLUSCS



Slug



Snail



Mussel

ECHINODERMS



Crab



Starfish



Sea Cucumber

WORMS



Earthworm



Bristle Worm



Flatworm