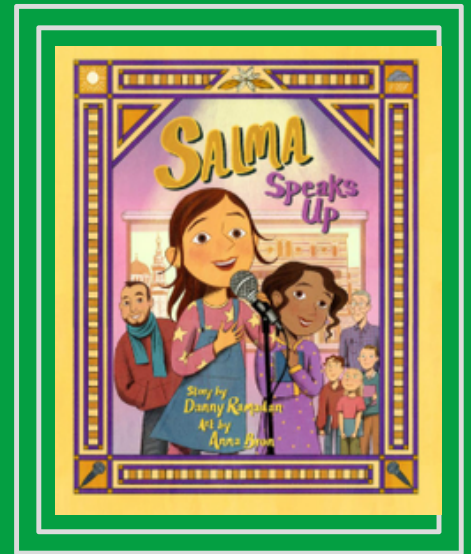


# “Salma Speaks Up” by Danny Ramadan



## Allies: Scenarios

Students will learn what it means to be an ally. Have a discussion about the word ALLY before beginning this activity. Students will then choose one scenario card (below) that describes an unfair comment, similar to what Nathan said in the book.

**The Ally's Response:** Students must decide how they, as an ally (the friend), would respond. They should consider three steps:

- Step 1: **The Feeling** (How does the unfair comment make you feel?)
- Step 2: **The Action** (What would you say or do right then?)
- Step 3: **The Follow-Up** (What would you do later to support your friend?)

**Writing:** Students will write their plan or a short, simple script.

**Drama:** Students act out the responses.



**“Salma Speaks Up”  
by  
Danny Ramadan**



**Allies: Scenario Cards**  
**“What if Nathan said...?”**

"That word isn't pronounced like that. You said it wrong."

"Why does your family always eat food that smells so different?"

"You don't sound like you're from here. Where are you really from?"

"You don't belong in the Speech Club if you can't speak clearly."

This activity encourages **empathy** and provides a safe space to practice the courage Salma demonstrates in the book.

